

Using a BibTeX reference list with LyX: Incredibly Easy!

Paul E. Johnson

September 27, 2005

I started with a completely blank LyX document. Actually, it is not completely blank. In my systems, I have a few little defaults saved so that all documents start out with a few customizations. These are all in Layout/Document. I always prefer to have “times” set as the default font, mostly because it makes better looking PDF output files. I have the margins set to 1 inch all around and the paper size is US letter (the default is European A4). In the document preamble like to have settings for “ragged right” (unjustified) output.

```
\usepackage{ragged2e}
\RaggedRight
\setlength{\parindent}{20pt}
```

But, except for that, everything is default.

In case you want to have a copy of the LyX file and figures for this essay, you can look in my LyX/LaTeX website:

<http://www.ku.edu/~pauljohn/latex/LyXBibTeXExample.tar.gz>

How to use a bibliography?

What is BibTeX?

BibTeX is program that works together with LaTeX. It uses a long standing format for storage of bibliographic information. It is an ordinary text file with information saved in a particular format, such as

```
@ARTICLE{JonesRadclifTabor1995,
author = {Bradford Jones and Benjamin Radcliffe and Charles Taber and Richard Timpone},
title = {Condorcet Winners and the Paradox of Voting},
journal = {American Political Science Review},
year = {1995},
volume = {89},
number = {1},
pages = {137-144},
owner = {pauljohn},
}
```

The “old timers” just memorize those categories & formats and type in cites. We don’t do that because it is so old fashioned. There are many bibliographic programs that can help. Lately I use “jabref” or “pybliographic” but have also had success with others.

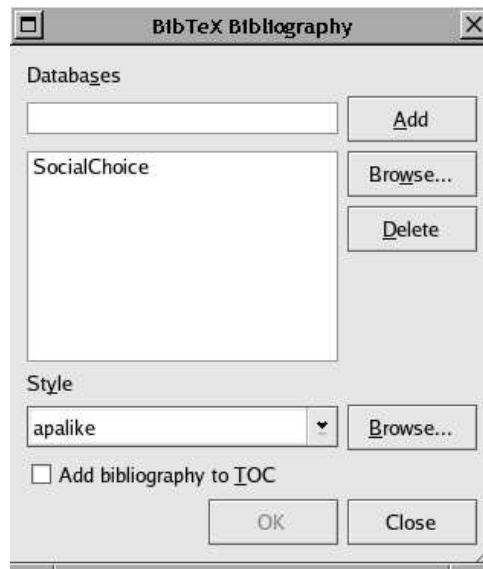
What to do in LyX?

1. Go to the place in your document where you want the references to be presented (presumably, the end). Click Insert/ Lists & TOC/ BibTeX Bibliography. LyX opens a menu, and in there you tell it
 - (a) the name of your bib database, the things discussed in the previous section.

- (b) a bibliographic style selected for your target journal/publisher. I have a separate instruction about using citations in the style of the *American Political Science Review*. Until you get my apsr biblio style, you should choose a style such as “apalike” (American Psychological Association) because it will be familiar to you.

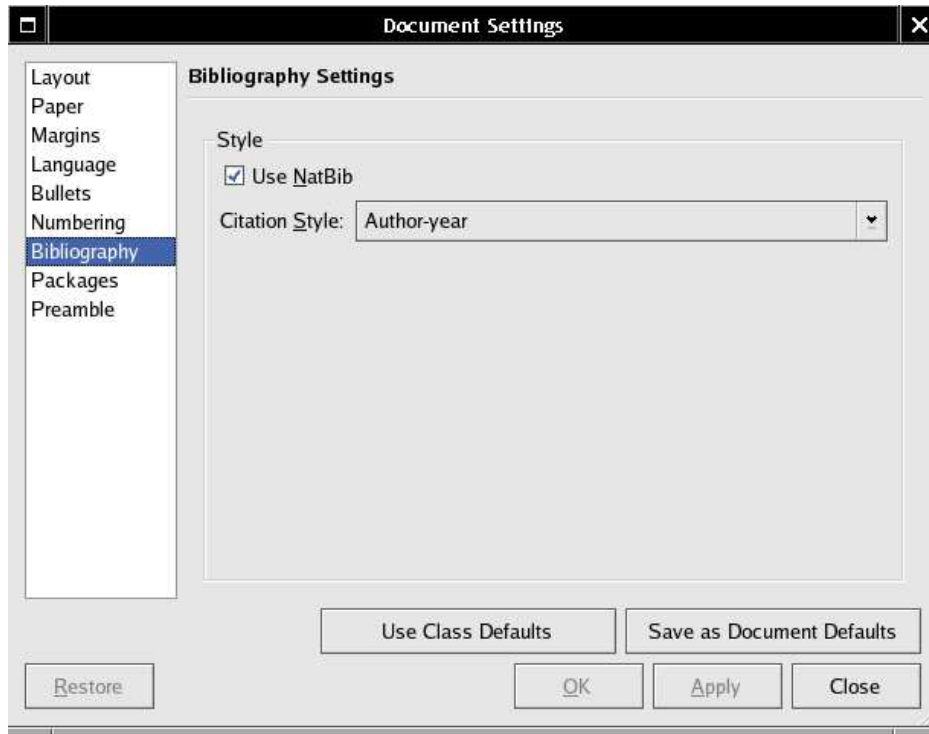
Close that dialogue menu, you are finished.

Figure 1: Insert Bibliography Here



2. Click LyX’s Layout/Document setting, choose Bibliography. Here you specify the style of citations you want. In social science, we prefer the author-year citation format, so click the “Use NatBib” button. And save your settings. Warning: NatBib will not work with all bibliography styles, but it does work with apalike and it will work with any of the ones I recommend, such as my apsa.

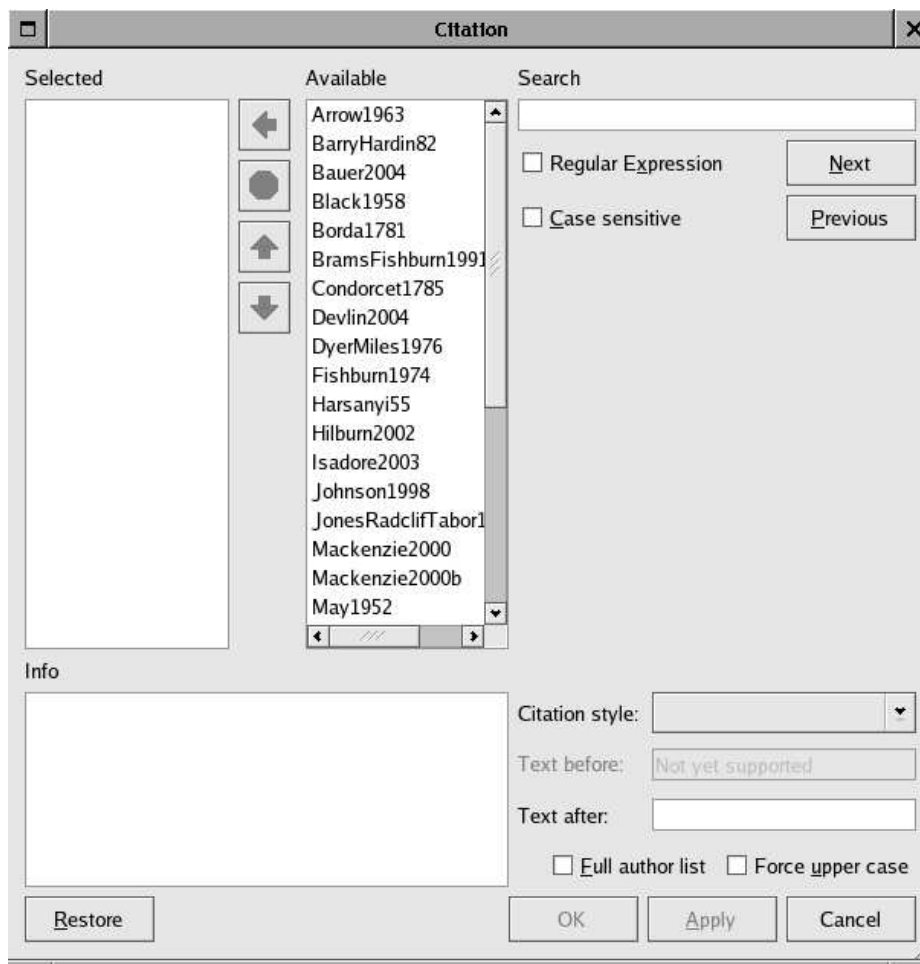
Figure 2: Document/Bibliography Dialogue



3. Now, suppose you are writing a document and you want to cite something. Click LyX's "Insert/ Citation button. A menu should open and you should see the list of reference "keys" in the column on the right. LyX should have read your bib file and found all of the items.

I'll go ahead and cite (Arrow, 1963), so you can see that \LaTeX and \BibTeX work together to build a reference list at the end.

Figure 3: Citation Insertion Dialogue Menu



References

Arrow, K. (1963). *Social Choice and Individual Values*, 2ed. Wiley.